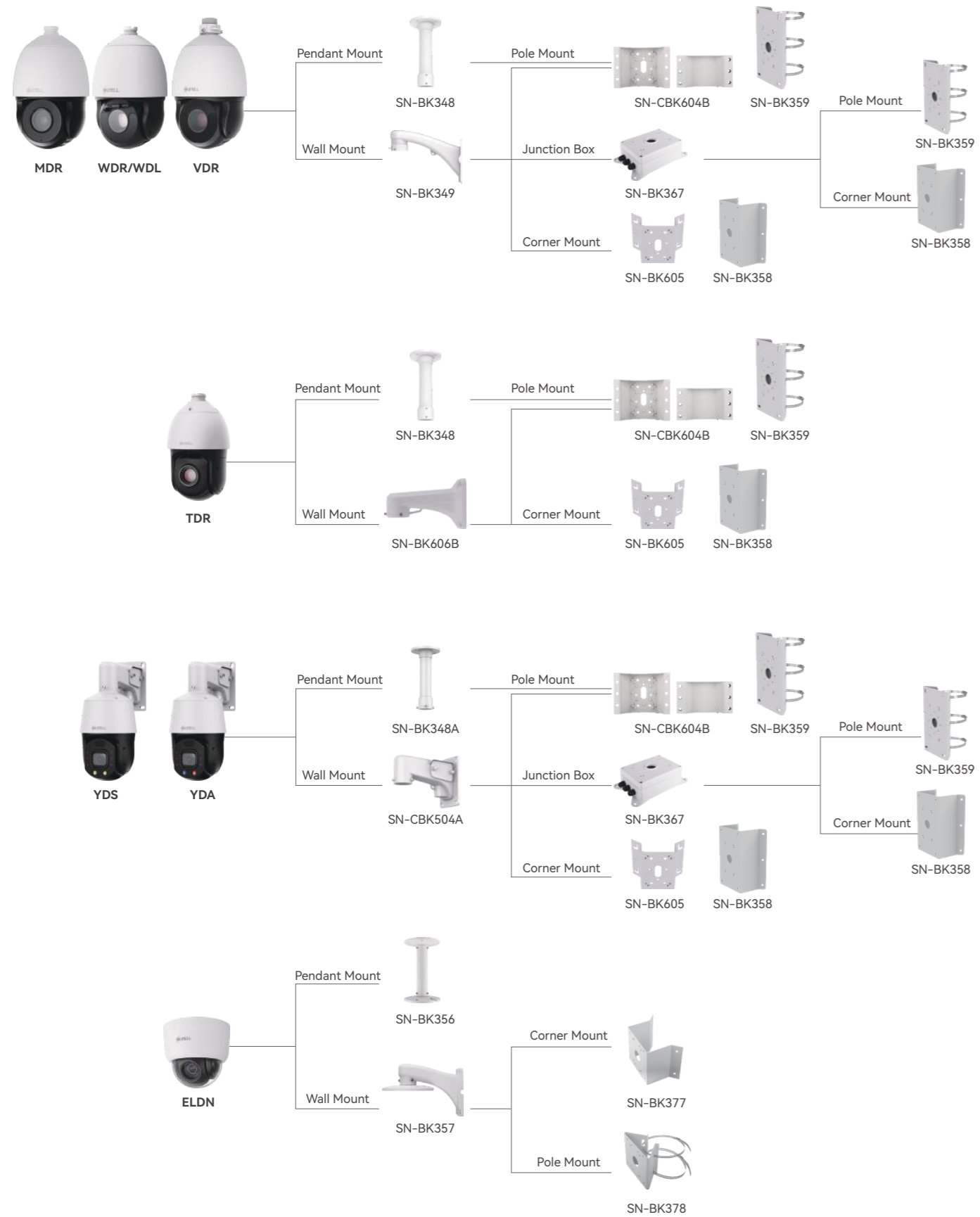


Accessories



PTZ Cameras



Shenzhen Sunell Technology Corporation

22-23F, Building 2, Chongwen Park, Nanshan Zhiyuan (Phase 3), No. 3370 Liuxian Avenue, Nanshan District, Shenzhen 518052

+86(755) 2675 4336 +86(755) 8602 6152 sales@sunellsecurity.com

©2023 Shenzhen Sunell Technology Corporation. All rights reserved.

The specifications and descriptions of products and services contained in this catalogue were correct at the time of publishing. Inner Range reserves the right to change specifications or withdraw products without notice.

Key Features

Deep Learning Algorithms



Face



Human



Vehicle



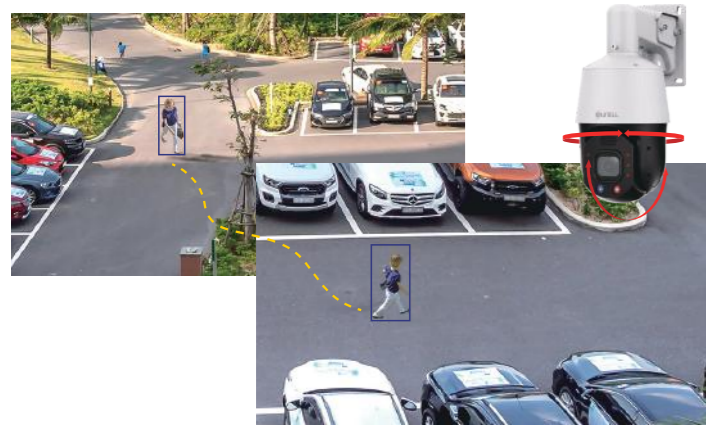
Fire/Smoke

Intelligent Tracking

- Human/Vehicle
- Auto Tracking; Auto Focus

Sound and Light Alarm

- Speaker coverage 60 m(200 ft)
- Sound and Light Alarm
- Two-way Audio



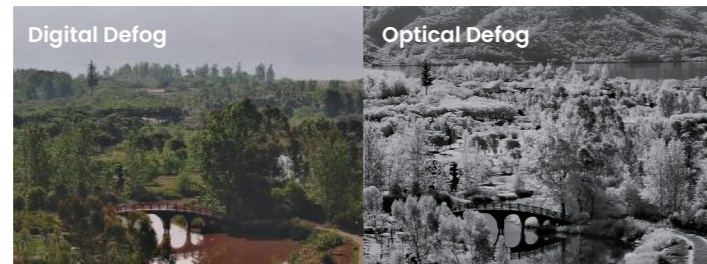
Ultra Starlight Full-color View

- 1/1.8" large sensor
- Ultra Starlight
- Smart Dual Light Full-color



Optical Defog

- 40X, 1/2.8", 5MP/4MP, 4.98-199.3 mm
- Digital Defog; Optical Defog



Products

Ultra Starlight			
8MP		8MP	
40 X 7-inch 	SN-IPS8681WDR-Z40 <ul style="list-style-type: none"> • 8 MP (3840 × 2160) @ 25/30 fps • 1/1.8" Sony STARVIS II CMOS • 40 X, 6.8 to 272 mm • IR: 300m (1000 ft) • Gyroscope: 6 Axis Anti-shake • Pan Range: 0° to 360°, Tilt Range: -10° to 90° • Audio: 1 in/out, alarm: 7 in/2 out, SD card slot • Wiper • 36 VDC, 24 VAC, PoE++(IEEE 802.3bt) 	40 X 7-inch 	SN-IPS8681VDR-Z40 <ul style="list-style-type: none"> • 8 MP (3840 × 2160) @ 25/30 fps • 1/1.8" Sony STARVIS II CMOS • 40 X, 6.8 to 272 mm • IR: 300m (1000 ft) • Gyroscope: 6 Axis Anti-shake • Pan Range: 0° to 360°, Tilt Range: -10° to 90° • Audio: 1 in/out, alarm: 7 in/2 out, SD card slot • IK10 • 36 VDC, 24 VAC, PoE++(IEEE 802.3bt)
4MP		4MP	
37 X 7-inch 	SN-IPS8641WDR-Z37 SN-IPS8641WDL-Z37 <ul style="list-style-type: none"> • 4 MP (2592 × 1520) @ 25/30 fps • 1/1.8" Sony STARVIS CMOS • 37 X, 6.8 to 251 mm • IR: 400m (1300 ft), Laser IR: 600 m (2000 ft) • Gyroscope: 6 Axis Anti-shake • Pan Range: 0° to 360°, Tilt Range: -10° to 90° • Wiper • Audio: 1 in/out, alarm: 7 in/2 out, SD card slot • 36 VDC, 24 VAC, PoE++(IEEE 802.3bt) 	37 X 7-inch 	SN-IPS8641VDR-Z37 <ul style="list-style-type: none"> • 4 MP (2592 × 1520) @ 25/30 fps • 1/1.8" Sony STARVIS CMOS • 37 X, 6.8 to 251 mm • IR: 400m (1300 ft) • Gyroscope: 6 Axis Anti-shake • Pan Range: 0° to 360°, Tilt Range: -10° to 90° • Audio: 1 in/out, alarm: 7 in/2 out, SD card slot • IK10 • 36 VDC, 24 VAC, PoE++(IEEE 802.3bt)
4MP		4MP	
30 X 5-inch 	SN-IPS8641YDS-Z30 <ul style="list-style-type: none"> • 4 MP (2592 × 1520) @ 25/30 fps • 1/1.8" Sony STARVIS CMOS • 30 X, 7 to 210 mm • IR: 250 m(820 ft), warm light: 60 m(200 ft) • Optical defog • Built-in Mic and 5W speaker • Sound and Light Alarm • Pan Range: 0° to 360°, Tilt Range: -15° to 90° • Audio: 1 in/out, alarm: 2 in/out, SD card slot • 36 VDC, 24 VAC, PoE+(IEEE 802.3at) 	30 X 5-inch 	SN-IPS8641YDA-Z30 <ul style="list-style-type: none"> • 4 MP (2592 × 1520) @ 25/30 fps • 1/1.8" Sony STARVIS CMOS • 30 X, 7 to 210 mm • IR: 250 m(820 ft) • Optical defog • Built-in Mic and 5W speaker • Sound and Light Alarm (red and blue lights) • Pan Range: 0° to 360°, Tilt Range: -15° to 90° • Audio: 1 in/out, alarm: 2 in/out, SD card slot • 36 VDC, 24 VAC, PoE+(IEEE 802.3at)

Products

Starlight			
5MP/4MP		5MP/4MP	
40 X 7-inch 	SN-IPS8653MDR-Z40 SN-IPS8643MDR-Z40 <ul style="list-style-type: none"> • 1/2.8" Sony STARVIS II CMOS • 40 X, 4.98 to 199.3 mm • IR: 200 m (650 ft) • Optical defog • Gyroscope: 6 Axis Anti-shake • Audio: 1 in/out, alarm: 7 in/2 out, SD card slot • 36 VDC, 24 VAC, PoE++(IEEE 802.3bt) 	30 X 7-inch 	SN-IPS8650WDR-Z30 SN-IPS8640WDR-Z30 <ul style="list-style-type: none"> • 1/2.8" Sony STARVIS CMOS • 30 X, 5.3 to 159 mm • IR: 200 m (650 ft) • Audio: 1 in/out, alarm: 7 in/2 out, SD card slot • Wiper • 36 VDC, 24 VAC, PoE++(IEEE 802.3bt)
5MP/4MP/2MP		5MP/4MP	
30 X 25 X 7-inch 	SN-IPS8650MDR-Z30 SN-IPS8640MDR-Z30 SN-IPS8620MDR-Z25 <ul style="list-style-type: none"> • 1/2.8" Sony STARVIS CMOS • 30 X, 5 MP/4 MP, 5.3 to 159 mm • 25 X, 2MP, 5 to 125 mm • IR: 200 m (650 ft) • Audio: 1 in/out, alarm: 7 in/2 out, SD card slot • 36 VDC, 24 VAC, PoE++(IEEE 802.3bt) 	30 X 5-inch 	SN-IPS8655YDR-Z30 SN-IPS8645YDR-Z30 <ul style="list-style-type: none"> • 1/2.8" Sony STARVIS II CMOS • 30X, 1/2.8", 5.3-159 mm • IR: 200 m (650 ft) • Audio: 1 in/out, alarm: 2 in/out, SD card slot • 36 VDC, 24 VAC, PoE+(IEEE 802.3at)
5MP/4MP/2MP		5MP	
30 X 25 X 5-inch 	SN-IPS8650TDR-Z30 SN-IPS8640TDR-Z30 SN-IPS8620TDR-Z25 <ul style="list-style-type: none"> • 30X, 1/2.8", 5MP/4MP, 5.3-159 mm • 25X, 1/2.8", 2MP, 5-125 mm • IR: 150 m (490 ft) • Audio: 1 in/out, alarm: 2 in/out, SD card slot • 36 VDC, 24 VAC, PoE+(IEEE 802.3at) 	15 X 4-inch 	SN-IPS8652ELDN-Z15 <ul style="list-style-type: none"> • 5MP (2592 × 1944) @ 25/30 fps • 1/2.8" Sony STARVIS II CMOS • 15 X, 5.3 to 79.5 mm • Pan Range: 0° to 360°, Tilt Range: 0° to 90° • SD card slot, up to 256GB • 12 VDC, PoE (IEEE 802.3af)
5MP			
5 X 3-inch 	SN-IPS8654ZDC-Z5 SN-IPS8654ZDS-Z5 <ul style="list-style-type: none"> • 5MP (2880 × 1620) @ 25/30 fps • 5X, 2.7 to 13.5 mm • IR: 50 m(160 ft), Warm Light: 30 m(100 ft) • Built-in Mic and speaker • Sound and light alarm (red and blue lights) • Pan Range: 0° to 355°, Tilt Range: -20° to 90° • Pan Speed: 0.1° to 60°/s, Tilt Speed: 0.1° to 50°/s • Audio: 1 in/out, alarm: 1 in/out, SD card slot • 12 VDC, PoE+ (IEEE 802.3at) 		